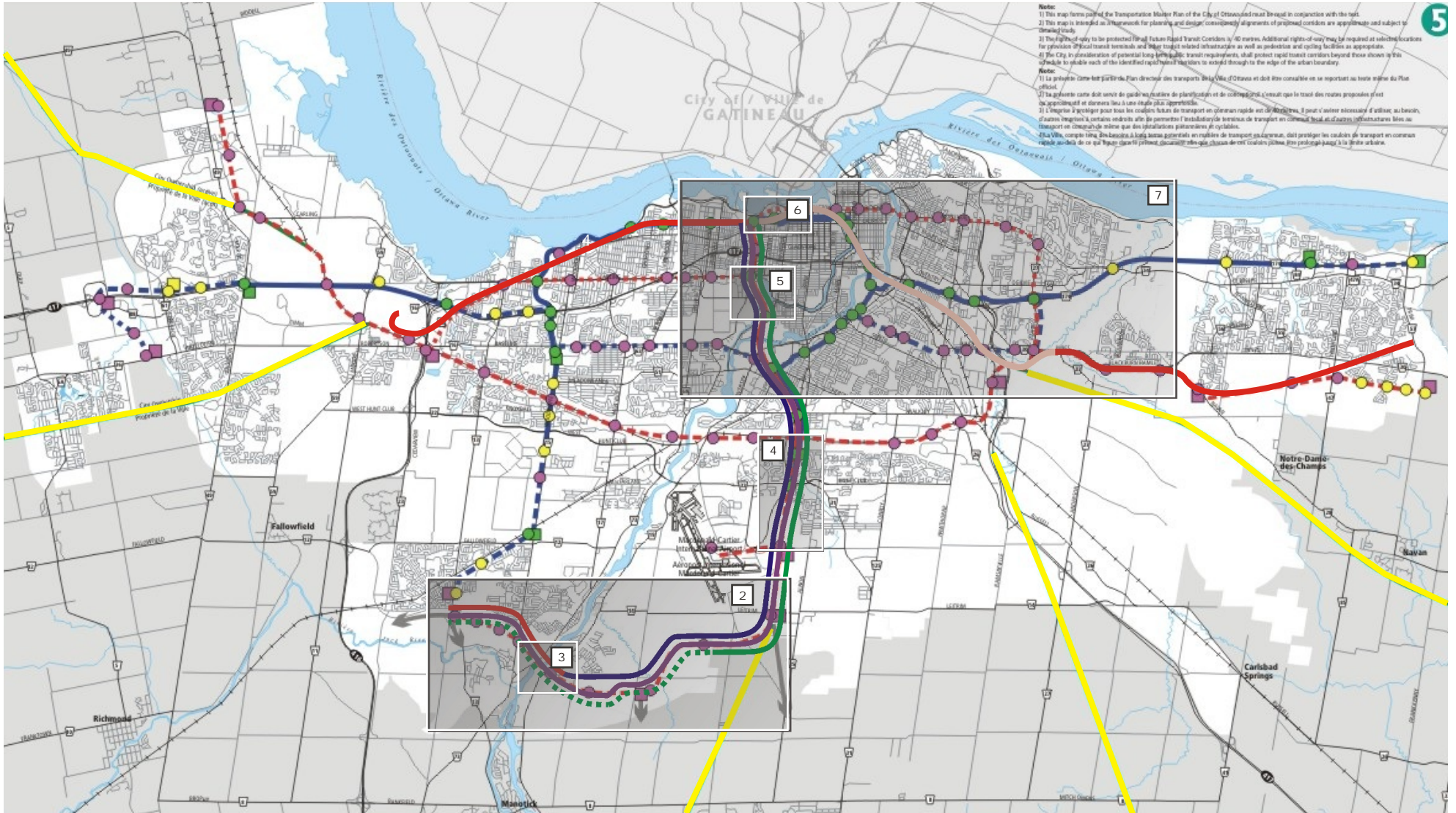


ANNEX A

Exhibits 1-7 Schedule

RAPID TRANSIT NETWORK - KEY MAP

(BASED ON TRANSPORTATION MASTER PLAN - MAP 5)



Note:
 1) This map forms part of the Transportation Master Plan of the City of Ottawa and must be read in conjunction with the text.
 2) This map is intended as a framework for planning and design; conceptual alignments of proposed corridors are approximate and subject to change.
 3) The right-of-way to be protected (Parc-O-Bus Rapid Transit Corridor) is 40 metres. Additional rights-of-way may be required at selected locations for provision of physical transit terminals and other transit related infrastructure as well as pedestrian and cycling facilities as appropriate.
 4) The City in consideration of potential long-term transit requirements, shall protect rapid transit corridors beyond those shown in this schedule to enable each of the identified rapid transit corridors to extend through to the edge of the urban boundary.
Note:
 1) Le présent carte fait partie du Plan directeur des transports de la Ville d'Ottawa et doit être consultée en se reportant au texte même du Plan.
 2) Le présent carte doit servir de cadre de planification et de conception; l'emplacement et de largeur des routes proposées n'est qu'approximatif et demeure sujet à une révision ultérieure.
 3) L'emprise à protéger pour tous les corridors futurs de transport en commun rapide est de 40 mètres. Il peut s'avérer nécessaire d'ajouter, au besoin, d'autres emprises à certains endroits afin de permettre l'installation de terminus de transport en commun, tout et d'autres infrastructures liées au transport en commun de même que des installations pour piétons et cyclistes.
 4) La Ville, compte tenu des besoins à long terme potentiels en matière de transport en commun, doit protéger les corridors de transport en commun rapide au-delà de ce qui figure dans le présent document afin que chaque corridor puisse être prolongé jusqu'à la limite urbaine.

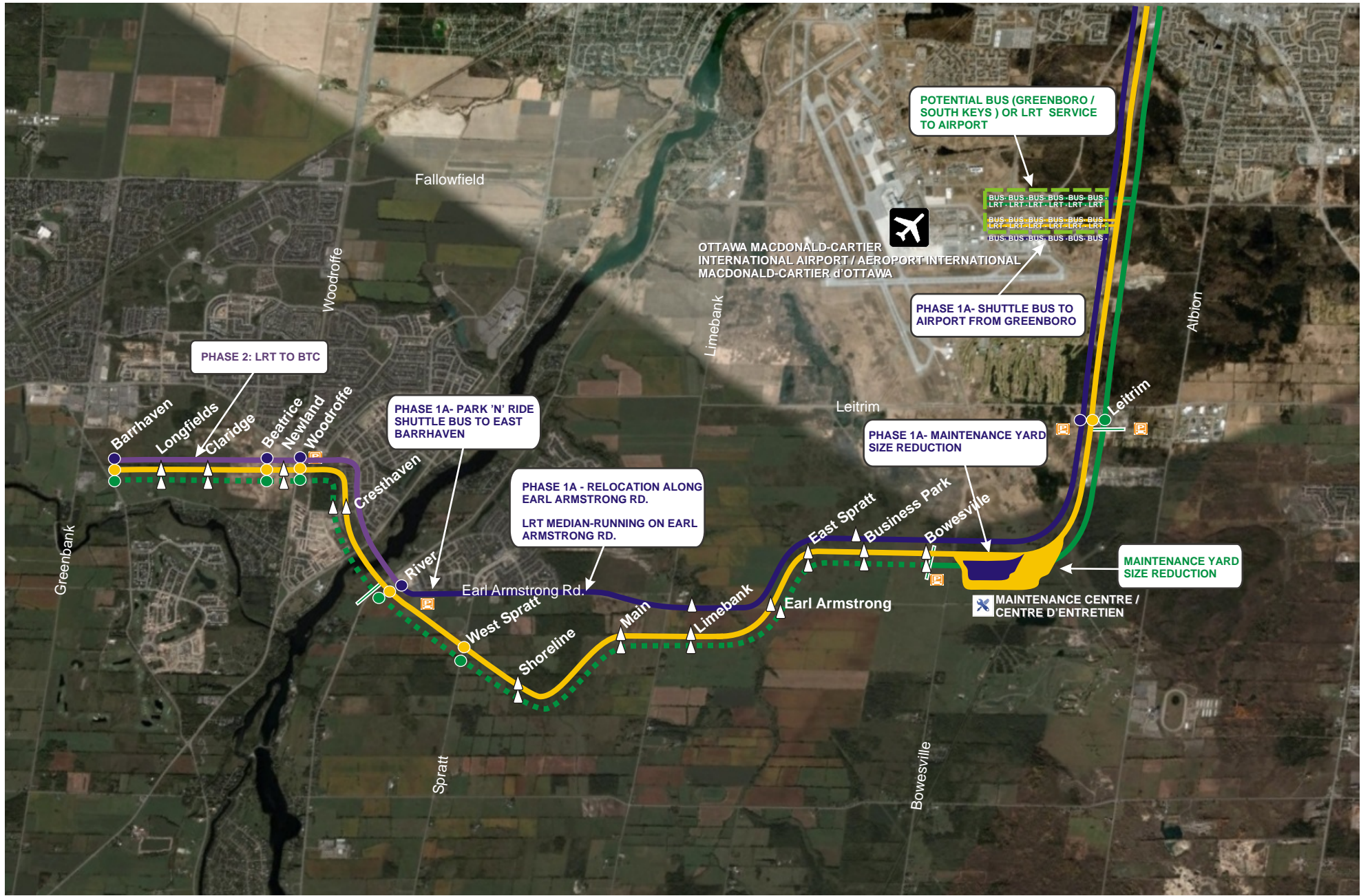
Map is not to scale
 Source: City of Ottawa, Development Services



Existing Bus Rapid Transit	Transport rapide par autobus actuel	Transit Station Existing	Station du transport en commun actuel
Existing Rail Rapid Transit	Transport rapide par train sur rail actuel	Transit Station Future Defined	Station du transport en commun futur déterminé
Future Bus Rapid Transit	Future transport rapide par autobus	Transit Station Future Potential	Station du transport en commun futur possible
Future Rail Rapid Transit	Future transport rapide par train sur rail actuel	Park & Ride Lot Existing	Parc-O-Bus actuel
Future Bus Transit (semi-exclusive)	Future transport par autobus (couloirs partiellement exclusifs)	Park & Ride Lot Future Potential	Parc-O-Bus futur déterminé
Future Rail Transit (semi-exclusive)	Future transport par train sur rail (couloirs partiellement exclusifs)	Conceptual Future	Parc-O-Bus futur possible
		Abandoned Railway Corridor	Avenir conceptuel
			Emprises ferroviaires abandonnées

Former N-S LRT Project	Alternative LRT
Phase 1A- Urdandale LRT Proposal	
Phase 1B- Urdandale LRT Proposal	
Phase 2- Urdandale LRT Proposal	

EX. 1
 REVIEW OF URBANDALE
 RAPID TRANSIT PROPOSAL



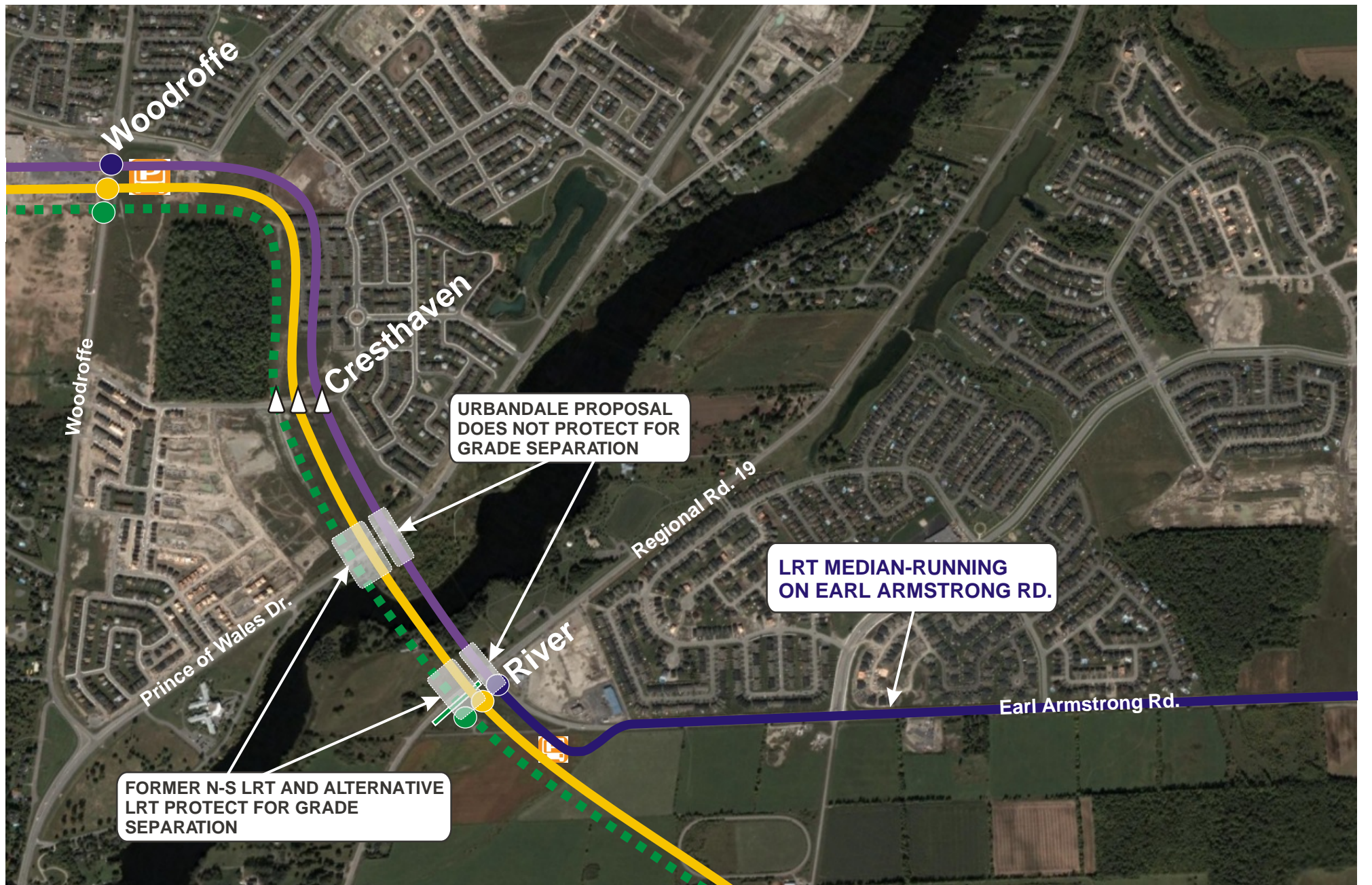
Map is not to scale



- FORMER NORTH-SOUTH LRT PROJECT
- PHASE 1A - URBANDALE LRT PROPOSAL
- PHASE 1A - URBANDALE AIRPORT BUS
- PHASE 1B - URBANDALE LRT PROPOSAL
- PHASE 2 - URBANDALE LRT PROPOSAL
- ALTERNATIVE LRT
- ALTERNATIVE LRT

- PLANNED STATION
- TEMPORARY STATION
- FUTURE STATION

- PARK 'N' RIDE / PARC-O-BUS
- POTENTIAL SERVICE CUT-OFF POINT



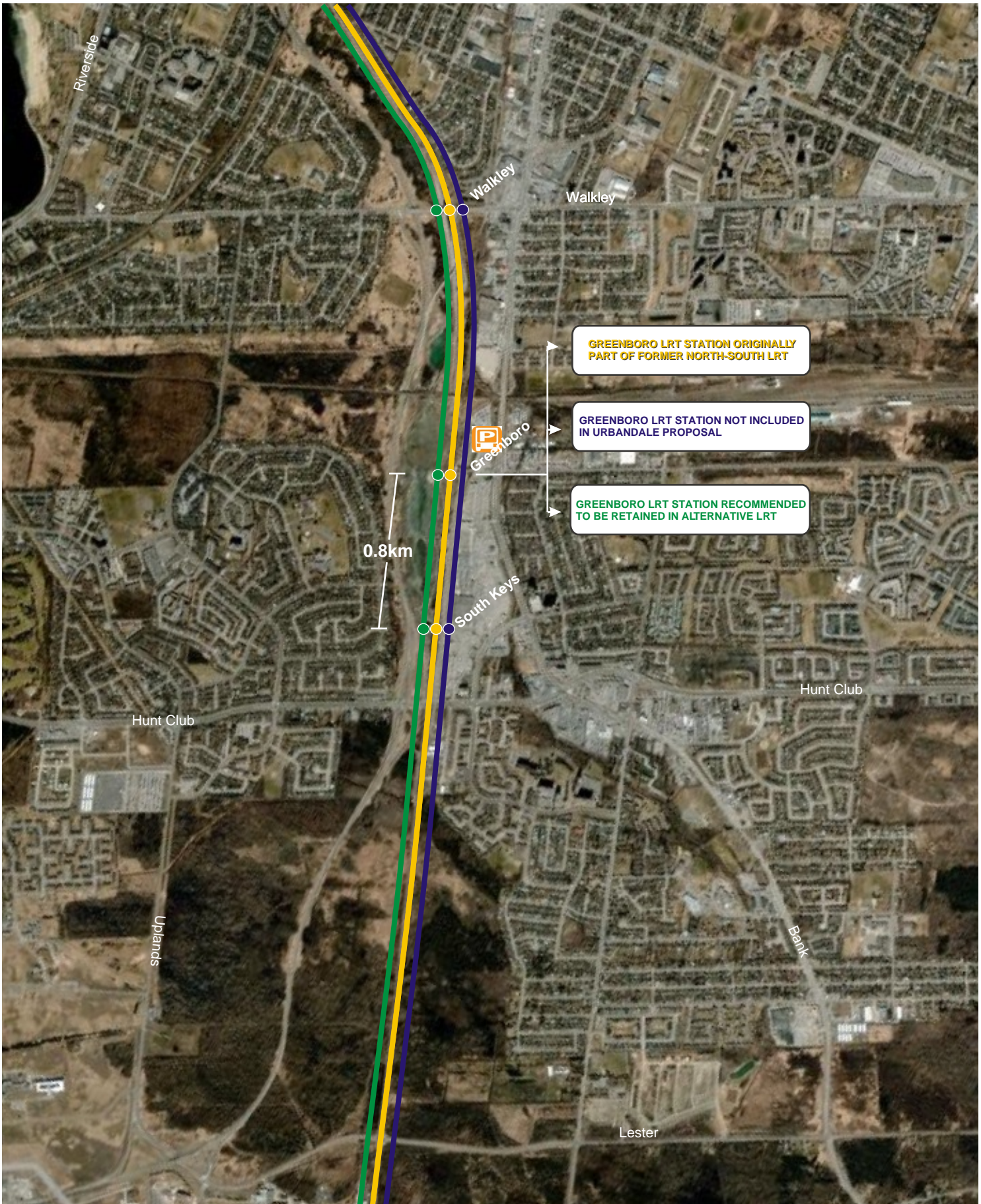
Map is not to scale



- FORMER NORTH-SOUTH LRT PROJECT
- PHASE 1A - URBANDALE LRT PROPOSAL
- PHASE 1A - URBANDALE AIRPORT BUS
- PHASE 1B - URBANDALE LRT PROPOSAL
- PHASE 2 - URBANDALE LRT PROPOSAL
- ALTERNATIVE LRT
- ALTERNATIVE LRT

- PLANNED STATION
- TEMPORARY STATION
- FUTURE STATION

- PARK 'N' RIDE / PARC-O-BUS
- POTENTIAL SERVICE CUT-OFF POINT



Map is not to scale

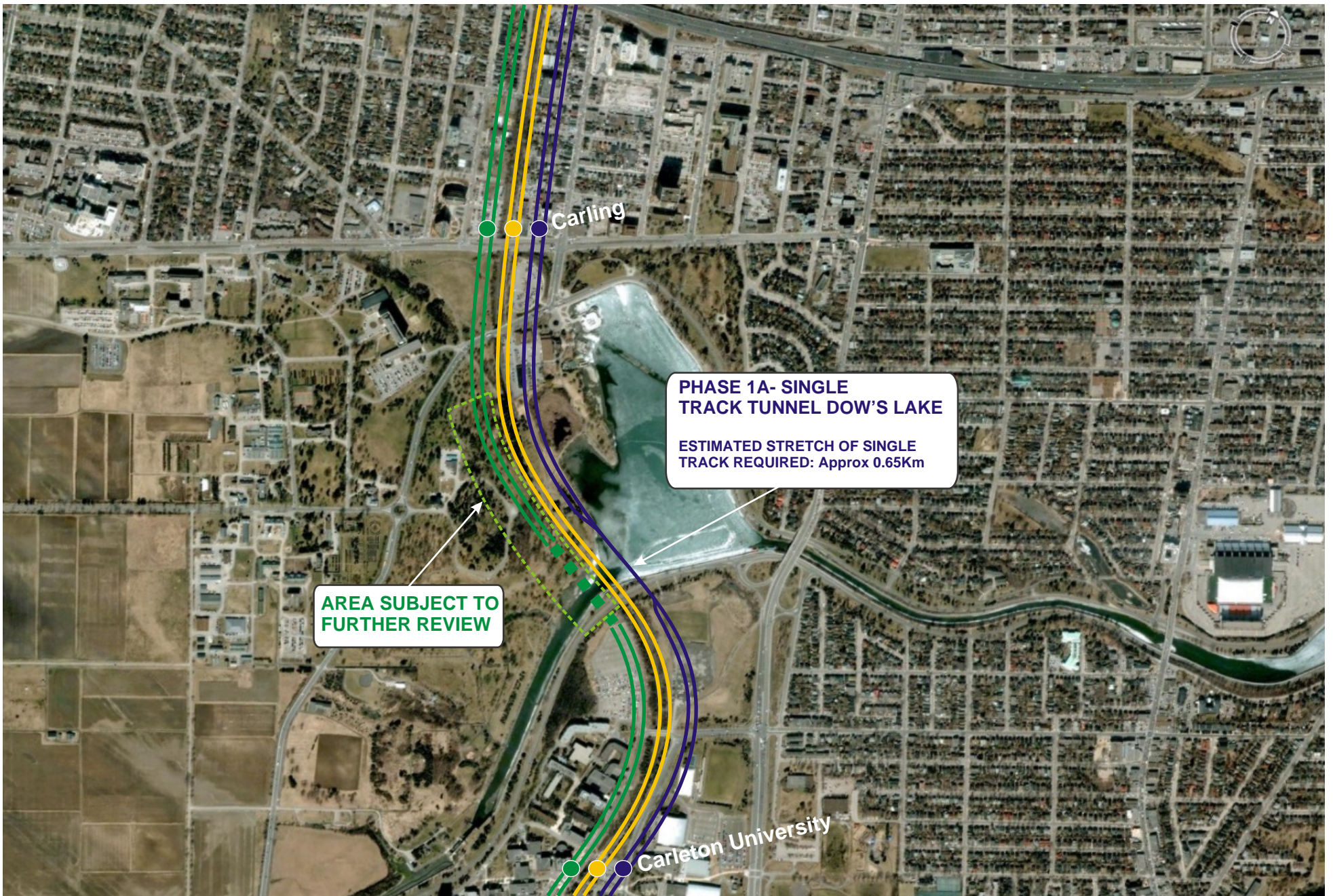


- FORMER NORTH-SOUTH LRT PROJECT
- PHASE 1A - URBANDALE LRT PROPOSAL
- PHASE 1A - URBANDALE AIRPORT BUS
- PHASE 1B - URBANDALE LRT PROPOSAL
- PHASE 2 - URBANDALE LRT PROPOSAL
- ALTERNATIVE LRT
- ALTERNATIVE LRT

- PLANNED STATION
- TEMPORARY STATION
- FUTURE STATION

- PARK 'N' RIDE / PARC-O-BUS
- POTENTIAL SERVICE CUT-OFF POINT

EX. 4
REVIEW OF URBANDALE
RAPID TRANSIT PROPOSAL



Map is not to scale



- FORMER NORTH-SOUTH LRT PROJECT
- PHASE 1A - URBANDALE LRT PROPOSAL
- PHASE 1A - URBANDALE AIRPORT BUS
- PHASE 1B - URBANDALE LRT PROPOSAL
- PHASE 2 - URBANDALE LRT PROPOSAL
- ALTERNATIVE LRT
- ALTERNATIVE LRT

- PLANNED STATION
- TEMPORARY STATION
- FUTURE STATION

- PARK 'N' RIDE / PARC-O-BUS
- POTENTIAL SERVICE CUT-OFF POINT



Map is not to scale



- FORMER NORTH-SOUTH LRT PROJECT
- PHASE 1A - URBANDALE LRT PROPOSAL
- PHASE 1A - URBANDALE AIRPORT BUS
- PHASE 1B - URBANDALE LRT PROPOSAL
- PHASE 2 - URBANDALE LRT PROPOSAL
- - - ALTERNATIVE LRT
- - - ALTERNATIVE LRT

- ● ● PLANNED STATION
- ○ ○ TEMPORARY STATION
- △ FUTURE STATION

- PARK 'N' RIDE / PARC-O-BUS
- POTENTIAL SERVICE CUT-OFF POINT

EX. 6
REVIEW OF URBANDALE
RAPID TRANSIT PROPOSAL



Map is not to scale



- FORMER NORTH-SOUTH LRT PROJECT
- PHASE 1A - URBANDALE LRT PROPOSAL
- PHASE 1A - URBANDALE AIRPORT BUS
- PHASE 1B - URBANDALE LRT PROPOSAL
- PHASE 2 - URBANDALE LRT PROPOSAL
- ALTERNATIVE LRT
- ALTERNATIVE LRT

- PLANNED STATION
- TEMPORARY STATION
- FUTURE STATION

- PARK 'N' RIDE / PARC-O-BUS
- POTENTIAL SERVICE CUT-OFF POINT